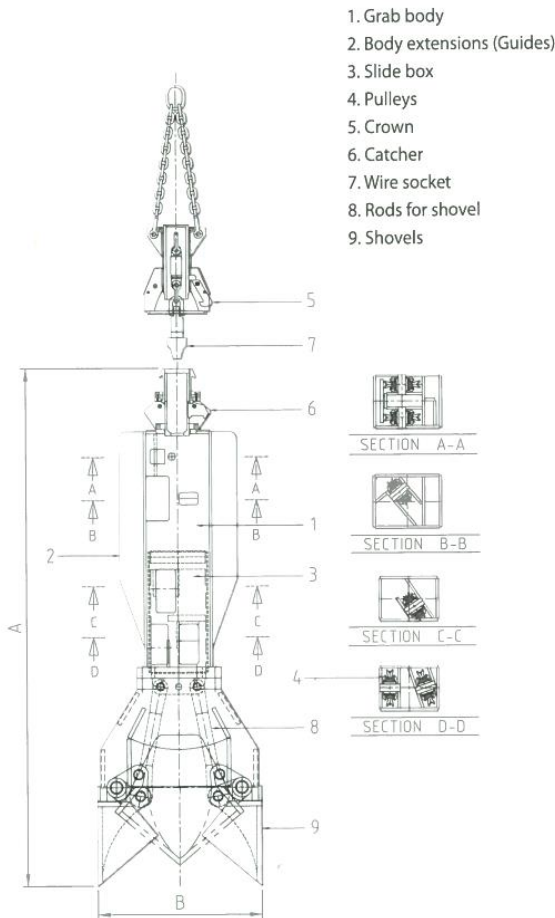


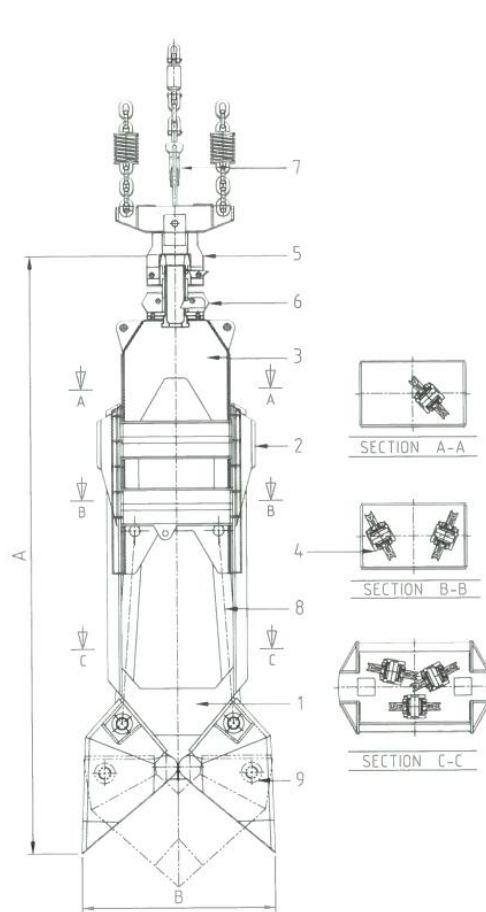
### Purpose:

The Hammer Grab falls under the category of large bored piles equipment. These piles are often used for road and railroad bridges as well as building foundations and harbour facilities. The hammer grab's main function is to excavate bored piles of soil, gravel and soft rock layers.

### Standard



### Heavy Duty



1. Grab body
2. Body extensions (Guides)
3. Slide box
4. Pulleys
5. Crown
6. Catcher
7. Wire socket
8. Rods for shovel
9. Shovels

### Standard and Heavy Duty Specifications

Model	Casing Diameter(mm)	Excavation Diameter B (mm)	Length of Machine A(mm)	Jaw Capacity(Litre)	Weight of Machine(ton)	Remarks
SMG10ST	1000/920	D890	3750	210	2.5	Standard Type
SMG12ST	1200/1120	D1070	3980	430	3.5	Standard Type
SMG15ST	1500/1400	D1360	4250	850	4.5	Standard Type
SMG18HD	1800/1700	D1650	4630	1100	9.0	Heavy Duty
SMG20HD	2000/1880	D1800	5680	1200	9.6	Heavy Duty
SMG25HD	2500/2380	D2250	5880	1800	10.5	Heavy Duty

# BERMINGHAM

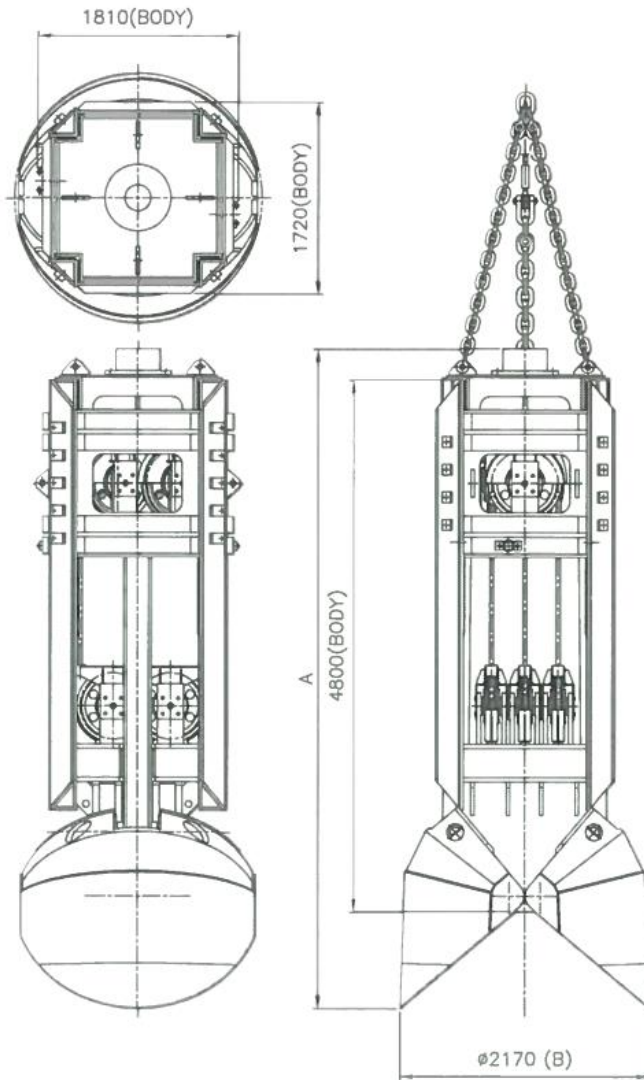
FOUNDATION SOLUTIONS  
SINCE 1897



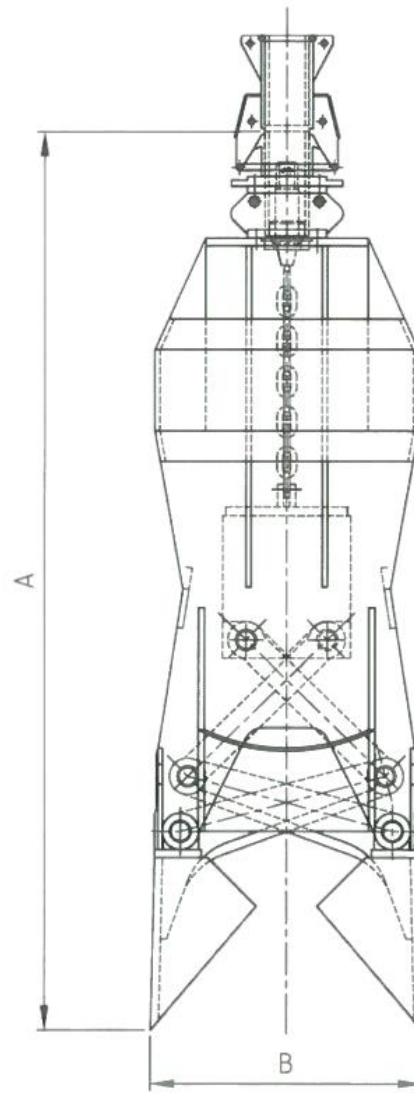
Toll Free (Canada & USA 1.800.668.9432)

www.berminghammer.com | bfssales@berminghammer.com

## HGHD



## X-link



### HGHD type Specifications

Model	Casing Diameter	Excavation Diameter B (mm)	Length of Machine A (mm)	Jaw Capacity (Litre)	Weight of Machine (ton)
SMG25HGHD	2500/2400	D2170	6040	2500	17
SMG17HGHD	2800/2680	D2370	6125	3500	18
SMG30HGHD	3000/2840	D2570	6210	4500	19

### X-Link type Specifications

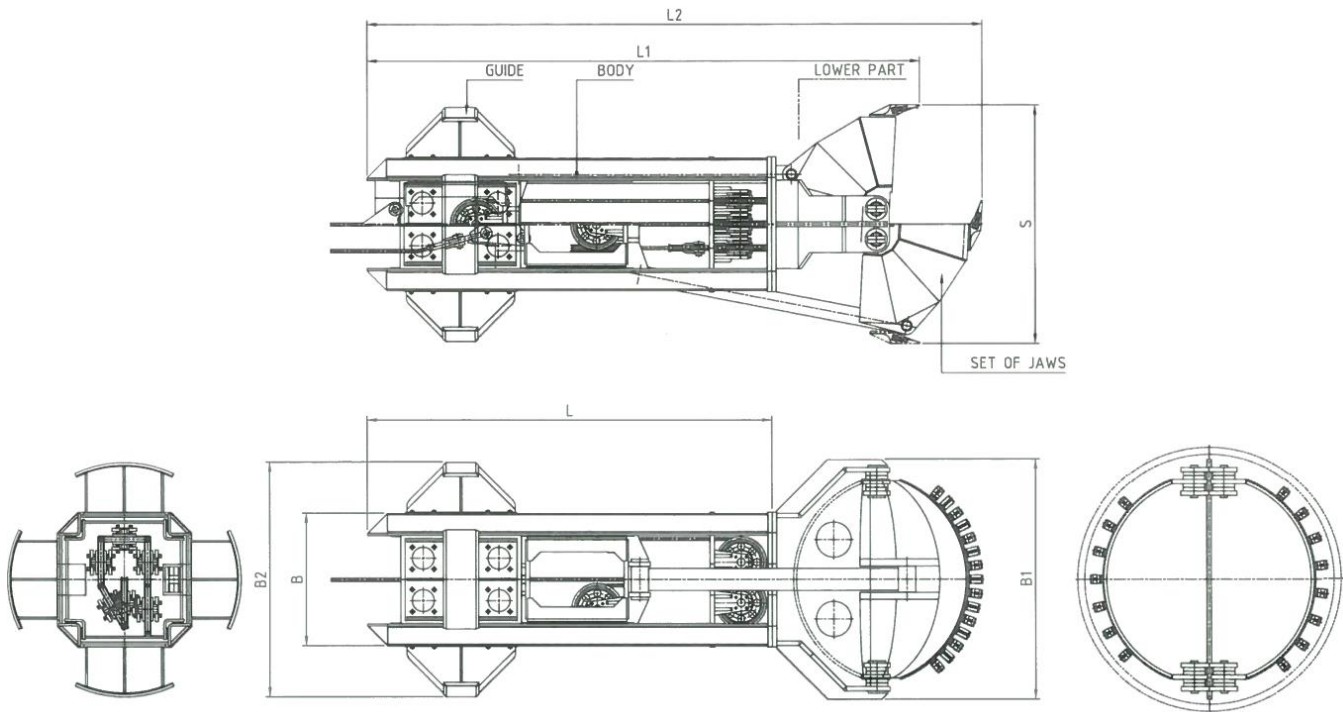
Model	Casing Diameter	Excavation Diameter B (mm)	Length of Machine A (mm)	Jaw Capacity (Litre)	Weight of Machine (ton)
SMG10XLT	1000/920	D850	4230	350	3.5
SMG12XLT	1200/1120	D1050	4380	520	4.5
SMG15XLT	1500/1400	D1350	4423	905	6.8
SMG18XLT	1800/1700	D1640	4973	1650	7.9
SMG20XLT	2000/1880	D1850	5453	2100	9.6
SMG25XLT	2500/2380	D2300	5738	4200	12.3
SMG30XLT	3000/2840	D2800	6898	8000	14

# BERMINGHAM

FOUNDATION SOLUTIONS  
SINCE 1897



Toll Free (Canada & USA 1.800.668.9432)  
www.berminghammer.com | bfssales@berminghammer.com



**Spherical Type Specifications:**

Model	Casing Diameter (mm)	L(mm)	L1(mm)	L2(mm)	B(mm)	B1(mm)	B2(mm)	S(mm)	Weight (ton)	Capacity (Litre)
SLKG-200	2000/1800	4600	5700	6100	1500	1770	1650	1810	15	970
SLKG-250	2500/2380	4600	6000	6615	1500	2290	2200	2310	20	2250
SKLG-300	3000/2840	4600	6215	7000	1500	2760	2660	2710	22	3900



**BERMINGHAM**  
**FOUNDATION SOLUTIONS**  
 SINCE 1897



Toll Free (Canada & USA 1.800.668.9432)  
[www.berminghammer.com](http://www.berminghammer.com) | [bfssales@berminghammer.com](mailto:bfssales@berminghammer.com)